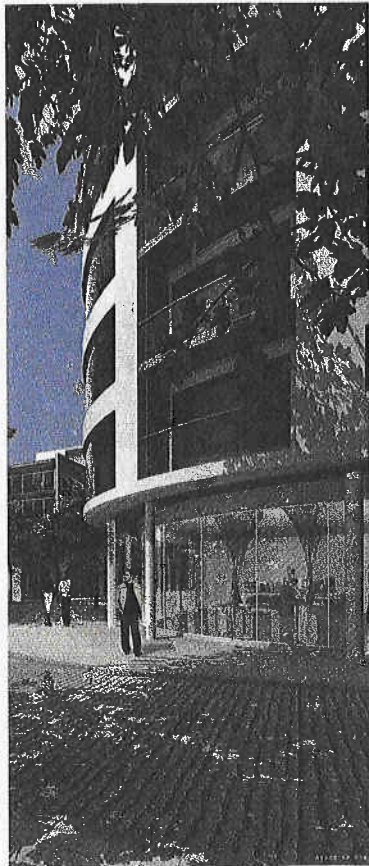


21 April 2007

**EG RESIDENTIAL**  
VIEWS OF THE WORLD

# LOOK OF THE NEW

**Grand scales** Regeneration is key to home and commercial projects in London and Sheffield, while overseas, unashamed luxury is built into residential schemes in Dubai and Thailand



**What Paynes and Borthwick Wharves**

**Where Deptford**, in Lewisham, south London

**Who Developers:** Lane Castle, with JER Partners

**Architect:** Assael Architects

**Why** Plans are under way to develop 247 residential units and 10 live-work units. Alongside retail space, there will be a restaurant/café, a gallery-cum-cultural venue and office/design studios overlooking a wide stretch of the river Thames.

The mixed-use development aims to attract new businesses and will, for the first time, open up the waterfront to the public, reinstate the historic route of Middle Watergate and bring waterside amenities into the area. The developer will work with local artists and members of Deptford's cultural community to create a destination that reflects the area's unique creative character. The scheme has planning permission and construction is due to start in early summer.