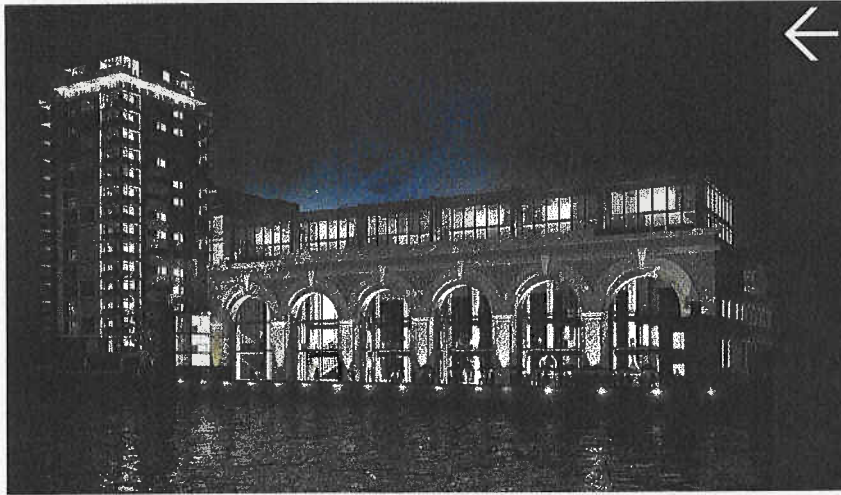


# Property Week.

2 February 2007



Urban mixed-use development specialist Lane Castle has won planning permission for the redevelopment and restoration of the old Paynes and Borthwick Wharves on the River Thames at Deptford, south-east London. The scheme comprises 247 homes and 38,000 sq ft (3,530 sq m) of commercial space and will open up the river front to the public. Construction starts this spring and is due for completion in 2009.